

BCG-315

Grinder



About

The Power Knot BCG-315 grinder allows you to grind animal bones, fruit stones, plant stalks, fibrous materials, and other dense organic waste before disposal. This heavy-duty grinder is engineered for facilities that require high-capacity processing of organic materials prior to digestion, composting, or recycling.

The BCG-315 grinder features an optional, reinforced modular frame that can be easily disassembled for transport, installation, or maintenance. The frame provides a stable, elevated platform for safe operation and efficient material flow.

With its powerful motor and double-shaft design, the BCG-315 ensures consistent particle size, improving the efficiency of waste handling processes including composting, aerobic digestion, and anaerobic digestion.



Benefits

- Grinds input materials into uniform particles for easy downstream processing
- Modular frame for flexible installation
- Reduces waste volume, transportation, and disposal costs
- Enhances recycling by turning bone and plant waste into reusable byproducts
- Improves hygiene and safety by preventing decomposition and odor buildup
- Constructed for continuous, heavy-duty operation
- Reduces risk of pests and contamination from organic waste
- Simplifies maintenance and cleaning with accessible surfaces

Applications

- Agriculture waste management
- Bone meal and fertilizer production
- Food waste recycling and processing
- Meat, poultry, and seafood rendering
- Pet food and animal feed manufacturing
- Livestock and slaughterhouse facilities
- Pharmaceutical material processing
- Renewable energy and biofuel applications
- Wildlife and zoo feed preparation



BiermanEquipment.com | Call Tim today at (712) 261-0137

Features

- Robust stainless steel frame, can be disassembled for relocation
- Optional adjustable legs for height customization and floor anchoring
- Double-shaft shredder for hard and fibrous materials
- Low-speed, high-torque motor for efficient, quiet operation
- Heat-treated cutting knives (HRC 13) for extended durability
- K-Series gearbox for high reliability and long life
- Custom hopper designed for safe and ergonomic loading
- Wall-mounted control box with emergency stop for operator safety
- Motor can be reversed to clear any blockage

Capacity

- 180 kg/h (400 lb/h)
- Largest bone: 400 mm (16")

Output Material

15 mm to 35 mm (0.6" to 1.3")

Power

11 kW

AC supply (order one type)

Without neutral (3L+PE)

208 V: 187 V to 230 V, 60 Hz

400 V: 360 V to 440 V, 50 Hz

Warranty

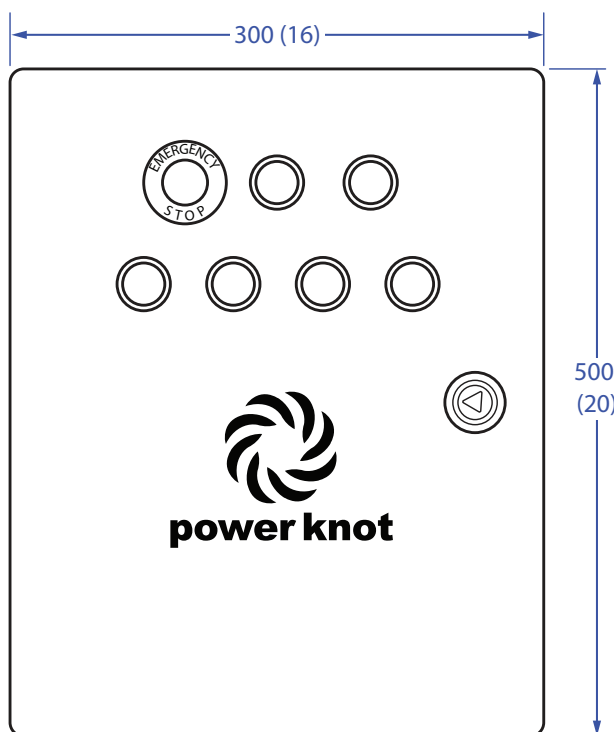
One year



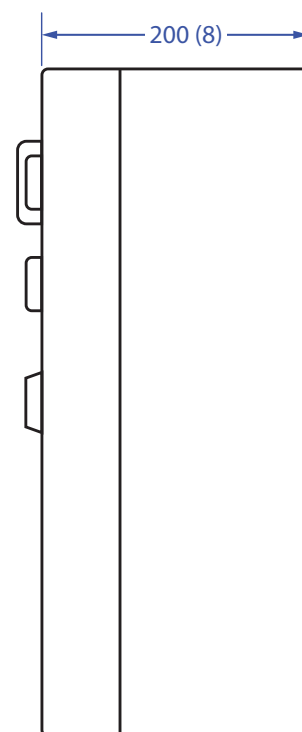
BiermanEquipment.com | Call Tim today at (712) 261-0137

Control Box

Dimensions in mm \pm 2 mm (inch \pm 0.1 inch)



Front view



Side view

BCG-315

Dimensions in mm ± 2 mm



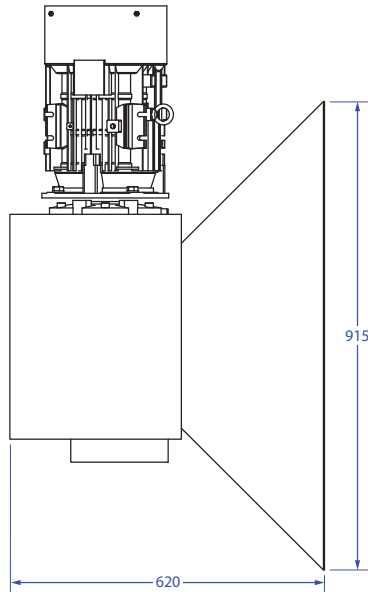
Tim Bierman
President / CEO

4206 R Avenue
Larrabee, Iowa 51029

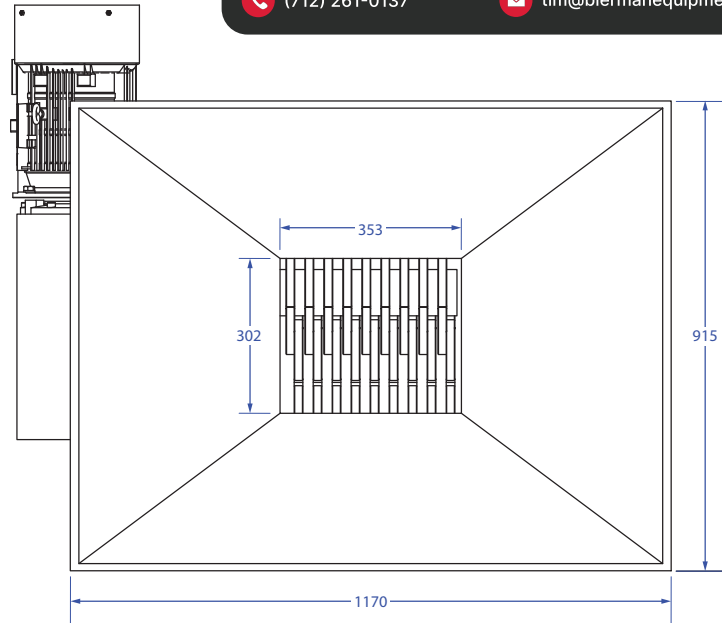
BiermanEquipment.com

(712) 261-0137

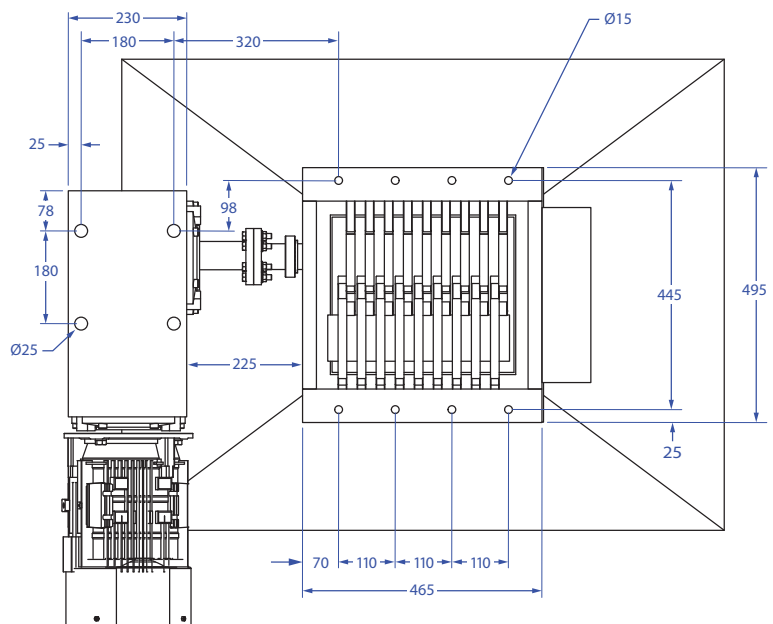
tim@biermanequipment.com



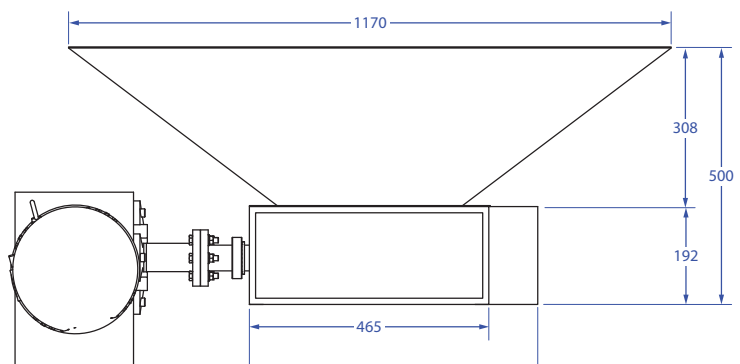
Side



Top



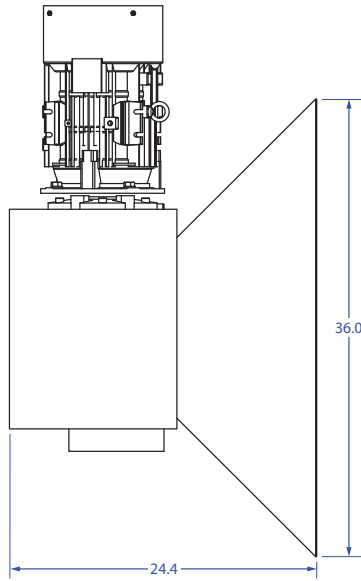
Bottom



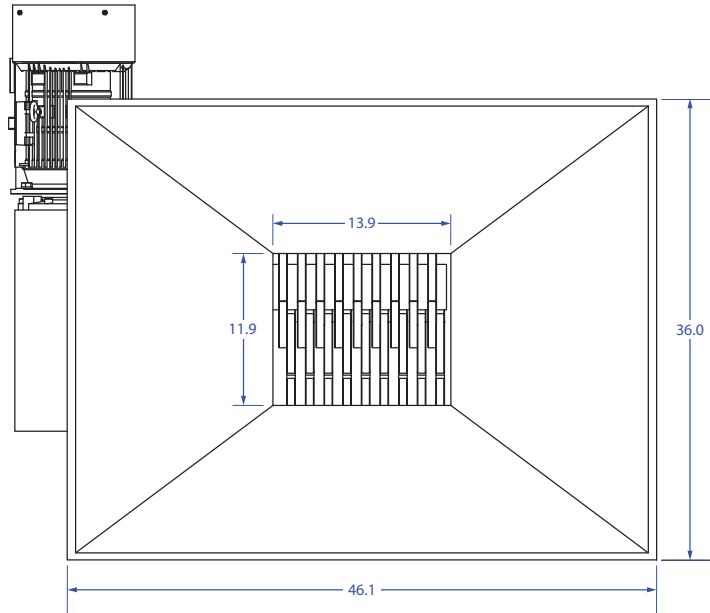
Front

BCG-315

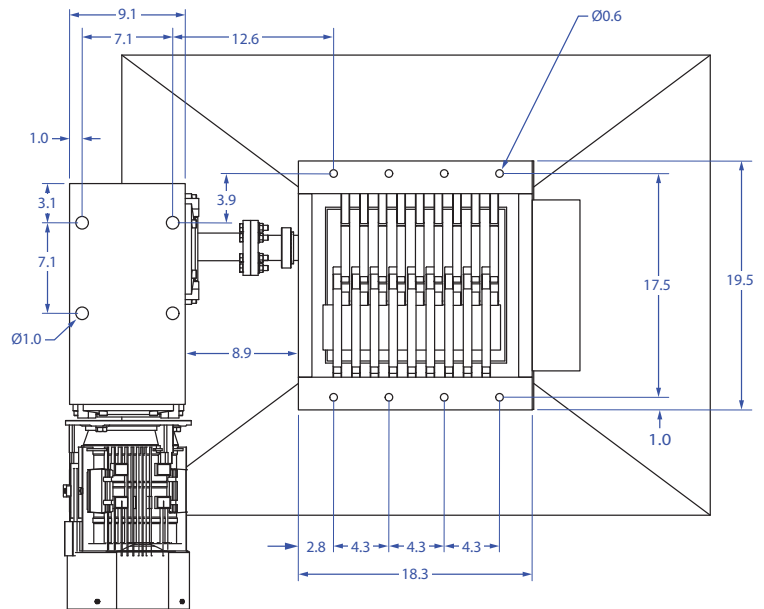
Dimensions in inches ± 0.1 "



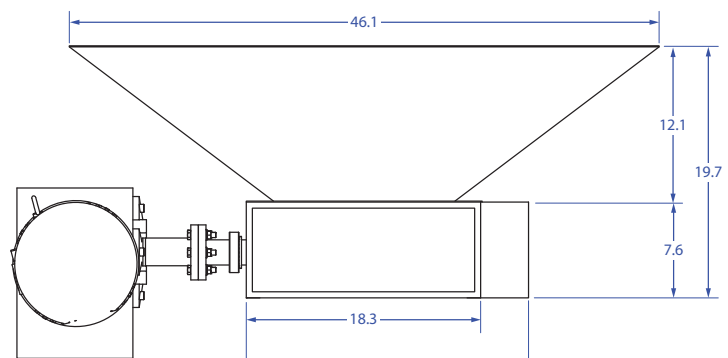
Side



Top



Bottom



Front



Tim Bierman
President / CEO

4206 R Avenue
Larrabee, Iowa 51029

BiermanEquipment.com

(712) 261-0137

tim@biermanequipment.com

BCG-315 Grinder Stand

Dimensions in mm ± 2 mm



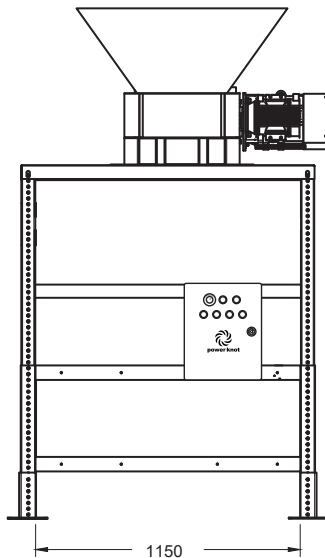
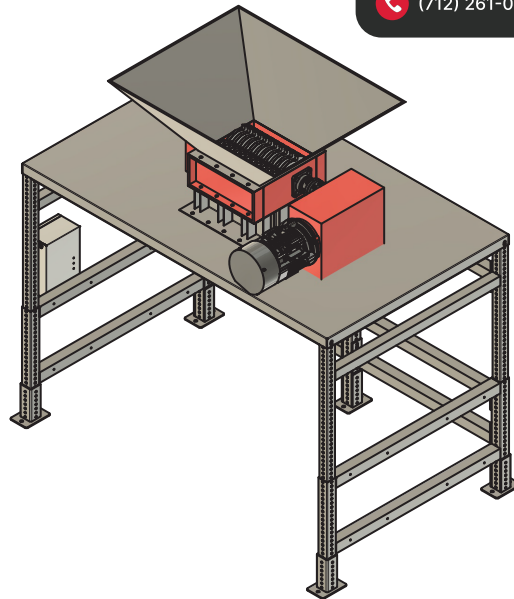
Tim Bierman
President / CEO

4206 R Avenue
Larrabee, Iowa 51029

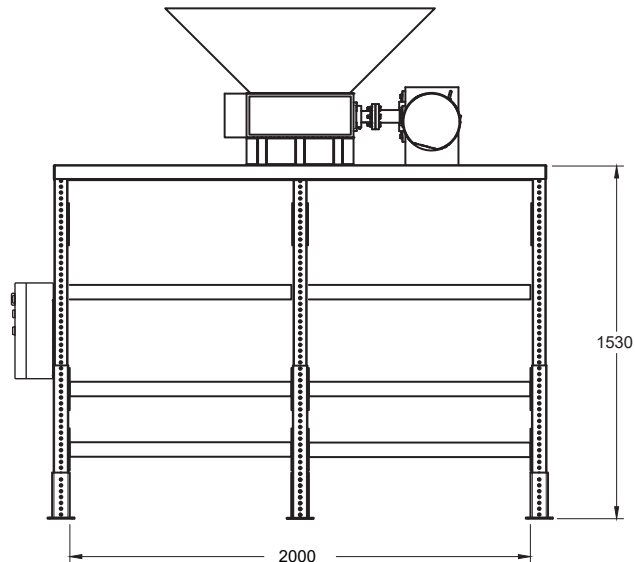
BiermanEquipment.com

(712) 261-0137

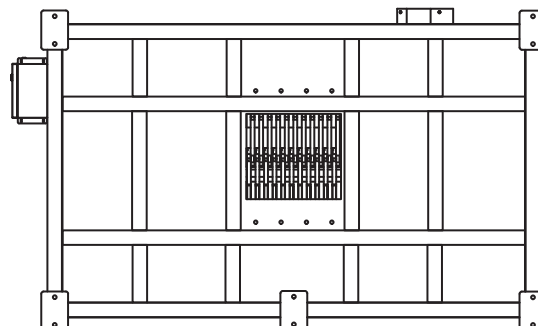
tim@biermanequipment.com



Side



Front



Top

BCG-315 Grinder Stand

Dimensions in inches ± 0.1 "

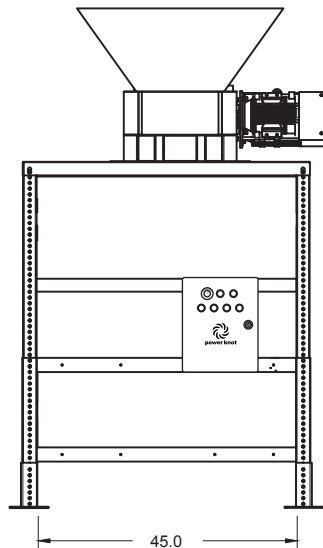
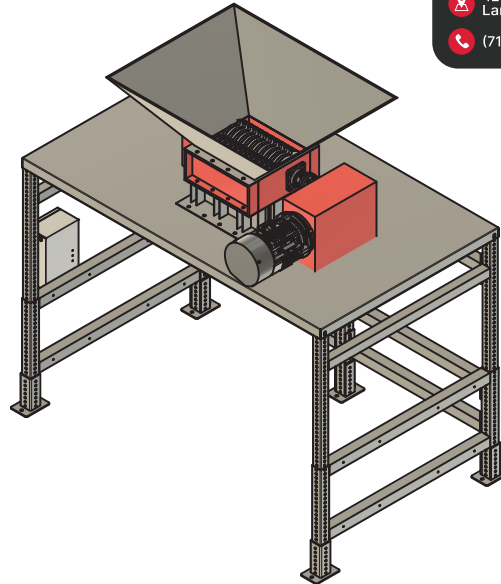


Tim Bierman
President / CEO

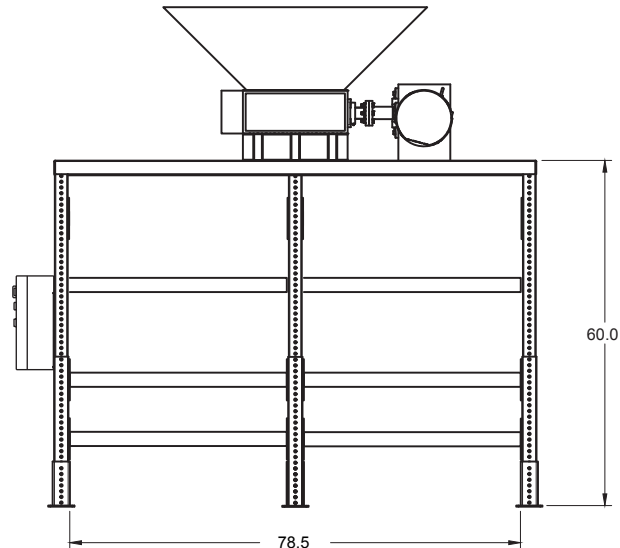
4206 R Avenue
Larrabee, Iowa 51029
(712) 261-0137

BiermanEquipment.com

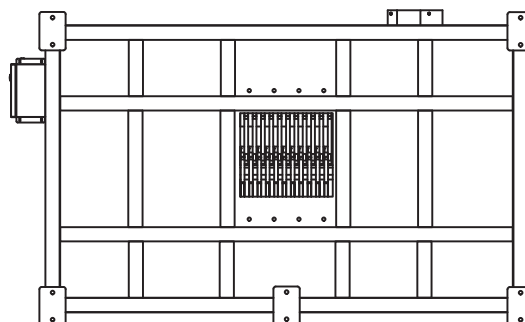
tim@biermanequipment.com



Side



Front



Top



Power Knot LLC | 47613 Warm Springs Blvd | Fremont, CA 94539 USA | +1-408-889-8433 | info@powerknot.com | www.powerknot.com

Power Knot, the Power Knot logo, the Power Knot mark, BCG and LFC are trademarks or registered trademarks of Power Knot LLC. All other trademarks used herein are the property of their respective owners. Copyright © 2023-2025 Power Knot LLC; all rights are reserved. Specifications are subject to change at any time without notice. Document 96-01341-01, revised 01 December 2025.