

BCG-310

Grinder



About

The Power Knot BCG-310 grinder allows you to grind various material before disposal. With this grinder, you can significantly reduce the volume of the material. These include:

- high density materials such as bison bones and teeth
- stones of fruits including avocado stones
- fibrous materials such as pineapple heads and lemongrass
- materials intended for further processing such as paper, cardboard, cans, rubber, and plastics

The grinder features an oversized hopper to permit large volumes of waste to be added at once. The grinder is supplied without a base, permitting you to install it where convenient, such as over a collection cart. The output can further enhance food waste processing by serving as an input in applications such as the manufacture of pet food or waste management.

The grinder will break down food waste efficiently, optimizing processes such as composting, aerobic digestion, and anaerobic digestion. For materials that are suitable for digestion within the LFC biodigesters, the organic waste may be processed faster after being ground.

The cutting blades are made of heat treated steel and can be cleaned with a hose pipe.



Applications

- Agriculture waste
- Biofuel and renewable energy
- Bone meal and fertilizer manufacturing
- Commercial facility sewage management
- Food waste management
- Livestock farming and butchering facilities
- Marijuana plant waste
- Meat processing and rendering
- Pet food processing
- Pharmaceutical material processing
- Poultry processing
- Slaughterhouse waste processing
- Seafood processing
- Wildlife and zoo feed preparation

Benefits

- Grinds inputs into coarse particles for easy processing
- Versatile placement for operational flexibility
- Reduces waste volume and disposal costs
- Enhances recycling by converting bone waste into usable byproducts
- Improves hygiene by preventing decomposition and odor buildup
- Heavy-duty construction for continuous, high-capacity operation
- Reduces risk of pests and contamination from raw bone waste
- Minimizes manual handling and improves workplace safety

Features

- Double shaft shredder for tough and high volume shredding
- Thicker knives can handle hard bones such as lamb shanks and bison bones
- Heat treated knives (HRC 13) and paddle arms provide 300% more strength and durability than traditional knives
- Specially designed low speed high torque motor
- K-Series gearbox provides 30% more life than traditional gearboxes
- Custom hopper that allows safer and easier processing
- Wall mounted control box for ease of operation
- Motor can go forward for normal operation and reverse to clear any blockages
- Emergency stop button for added safety

Capacity

- 180 kg/h (400 lb/h)
- Largest bone: 400 mm (16")

Output Material

15 mm to 35 mm

Power

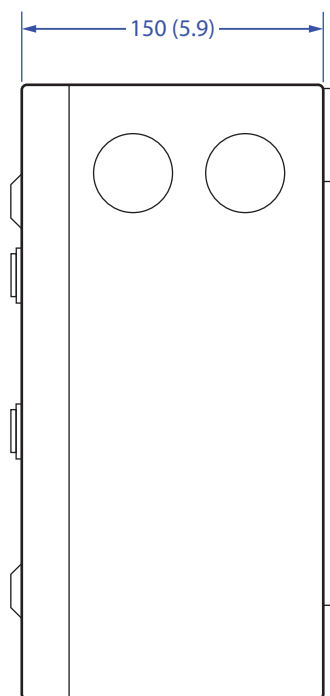
5.5 kW, 208V, 3-phase, 50 to 60 Hz

Warranty

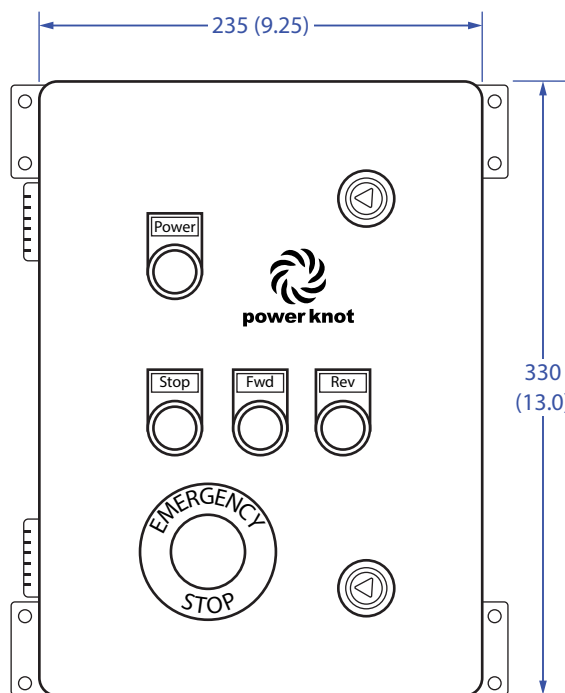
One year

Control Box

Dimensions in mm \pm 2 mm (inch \pm 0.1 inch)



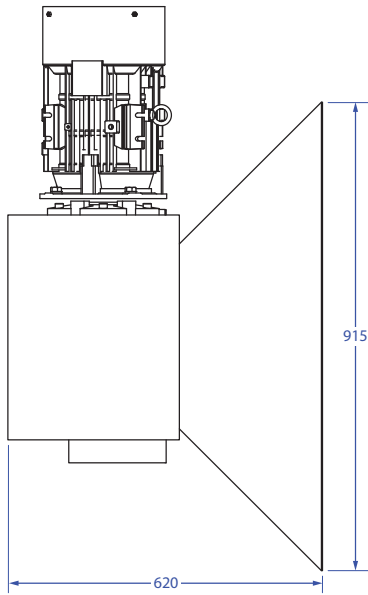
Side view



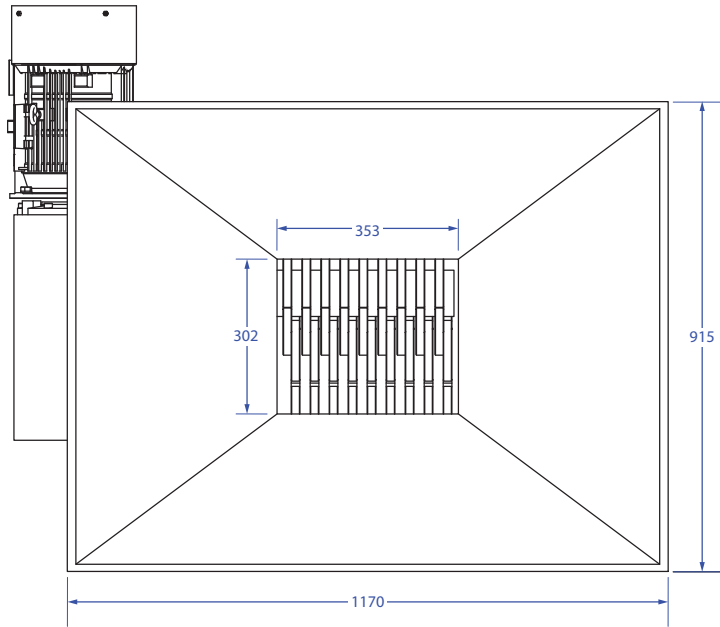
Front view

BCG-310

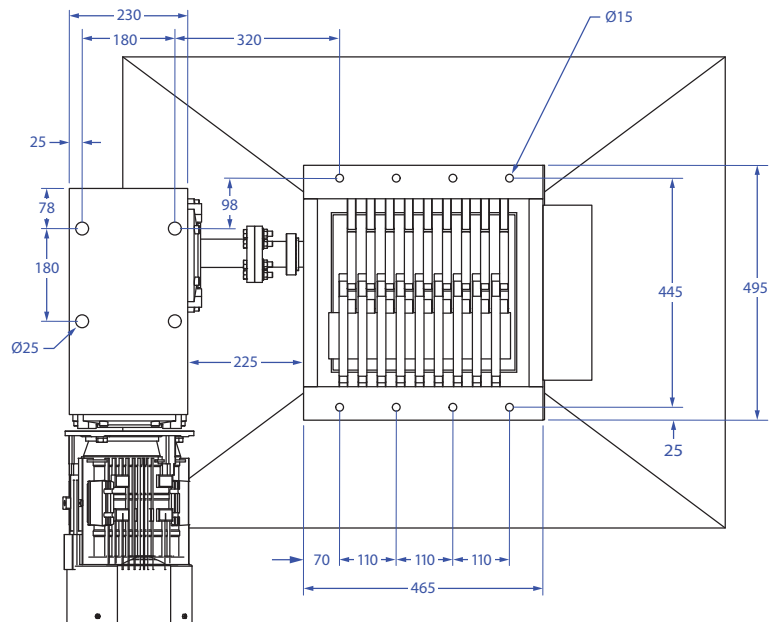
Dimensions in mm ± 2 mm



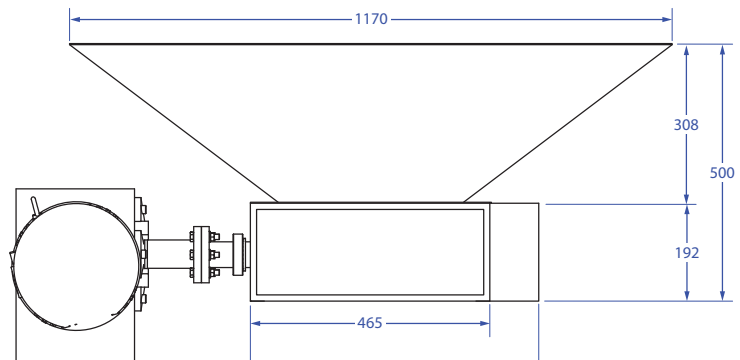
Side



Top



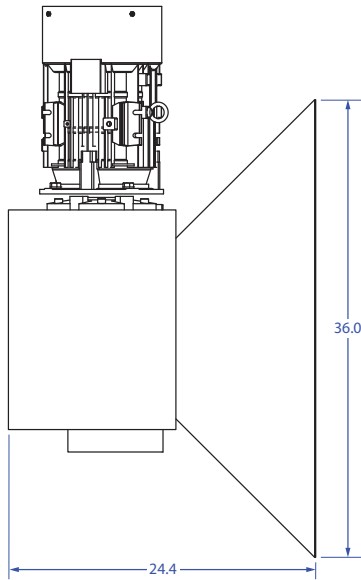
Bottom



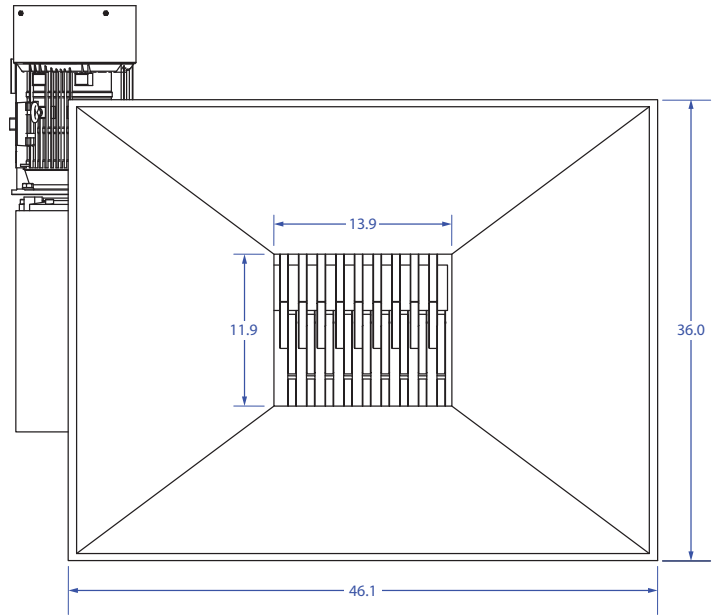
Front

BCG-310

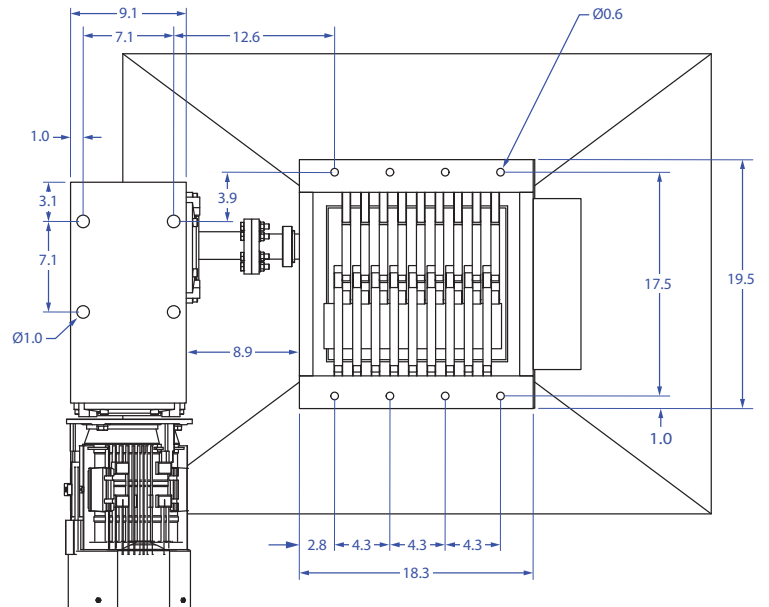
Dimensions in inches ±0.1"



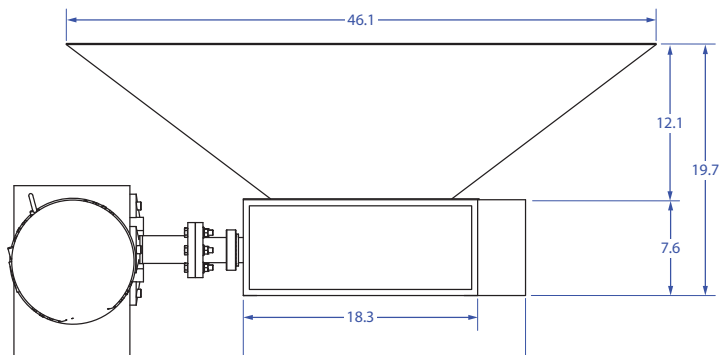
Side



Top



Bottom



Front



BiermanEquipment.com
Call Tim today at (712) 261-0137



Power Knot LLC | 47613 Warm Springs Blvd | Fremont, CA 94539 USA | +1-408-889-8433 | info@powerknot.com | www.powerknot.com

Power Knot, the Power Knot logo, the Power Knot mark, BCG and LFC are trademarks or registered trademarks of Power Knot LLC. All other trademarks used herein are the property of their respective owners. Copyright © 2023-2025 Power Knot LLC; all rights are reserved. Specifications are subject to change at any time without notice. Document 96-01266-04, revised 03 March 2025.